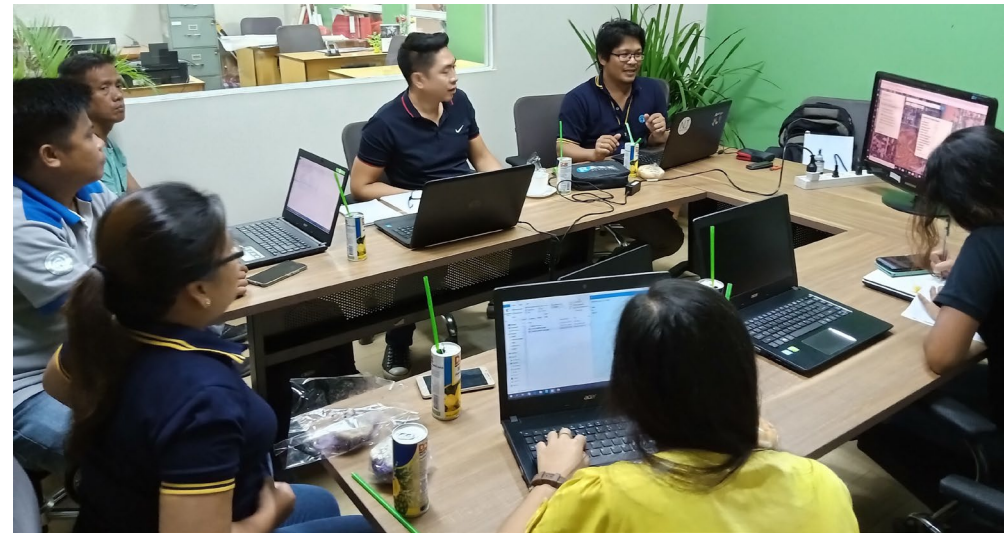


Plan for today

1. Intro to i-Tree
2. i-Tree Landscape
3. i-Tree Canopy
4. i-Tree Planting



What is i-Tree?

“Putting USFS Urban Forest science into the hands of users”

- Public domain science
- Free tools
- Continuously improved
- Dedicated outreach
- Technical support

www.itreetools.org

i-Tree delivers current, peer-reviewed tree benefits estimation science from the USDA Forest Service to all types of users with free tools and support.



The trees around you:
 remove hazardous pollutants from the air you breathe,
 absorb carbon dioxide from the air to store as wood,
 and control storm water by intercepting and absorbing rainfall.

Trees provide more than just beauty and shade.

They work hard for all of us, every day!

Click here to learn more.

Tools for assessing individual trees



MyTree

Are you new to i-Tree? Start with our EASIEST tool! MyTree helps you quickly assess **individual trees** with a minimum of fuss.
web browser or Android | Apple devices; Learn [How to use it!](#)



i-Tree Design

A full-featured web tool with expanded building interactions and forecasting for estimating the benefits of **individual trees**.
via your web browser; Learn [How to use it!](#)



i-Tree Eco

Eco is our flagship tool that accommodates tree inventory IMPORT or field data evaluation to derive **individual tree** benefit estimates.
requires installation on a Windows PC; Learn [How to use it!](#)

Tree canopy area assessment tools



OurTrees

Beta release: Quick **tree canopy** and related information for your community within the continental US!
web browser or Android | Apple devices



i-Tree Landscape

US **tree canopy** and Census maps/data at your fingertips! Identify priority planting & protection areas for climate & social issues.
via your web browser; Learn [How to use it!](#)



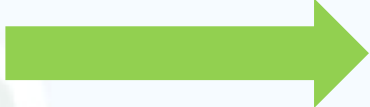
i-Tree is a Cooperative Initiative



i-Tree Demonstrating tree value



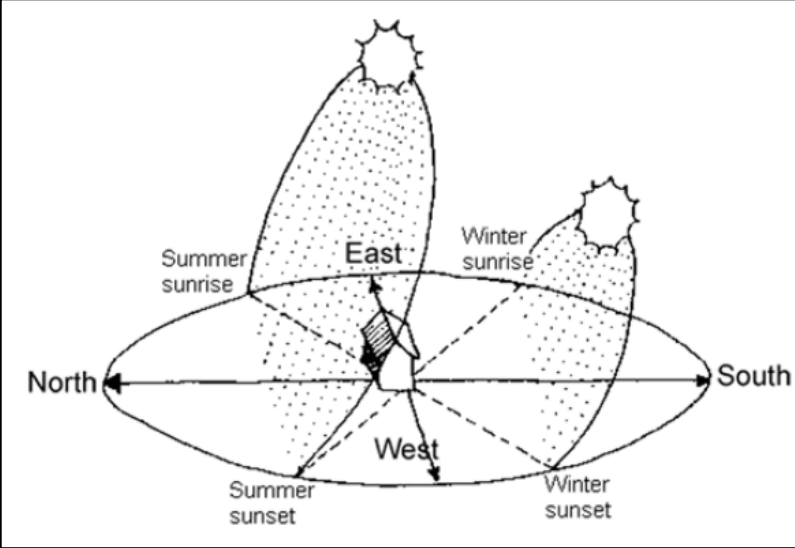
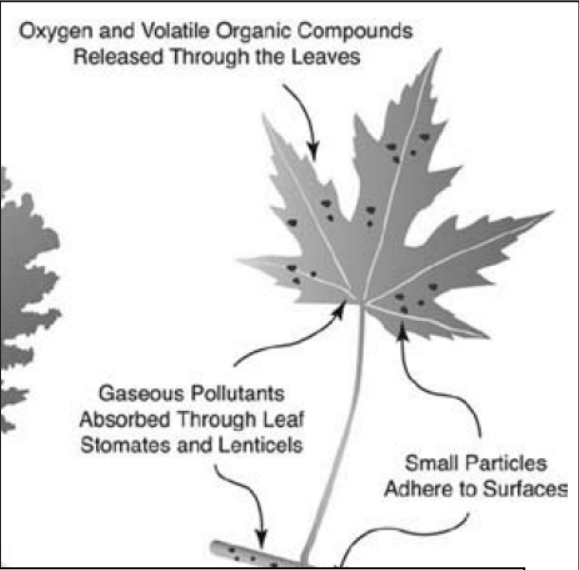
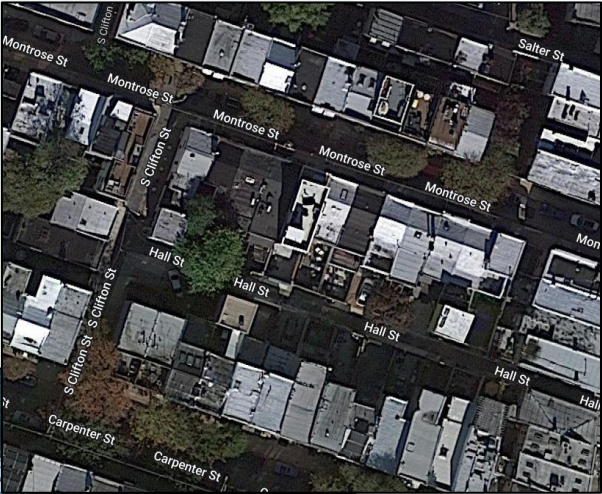
Structure



Function



Value

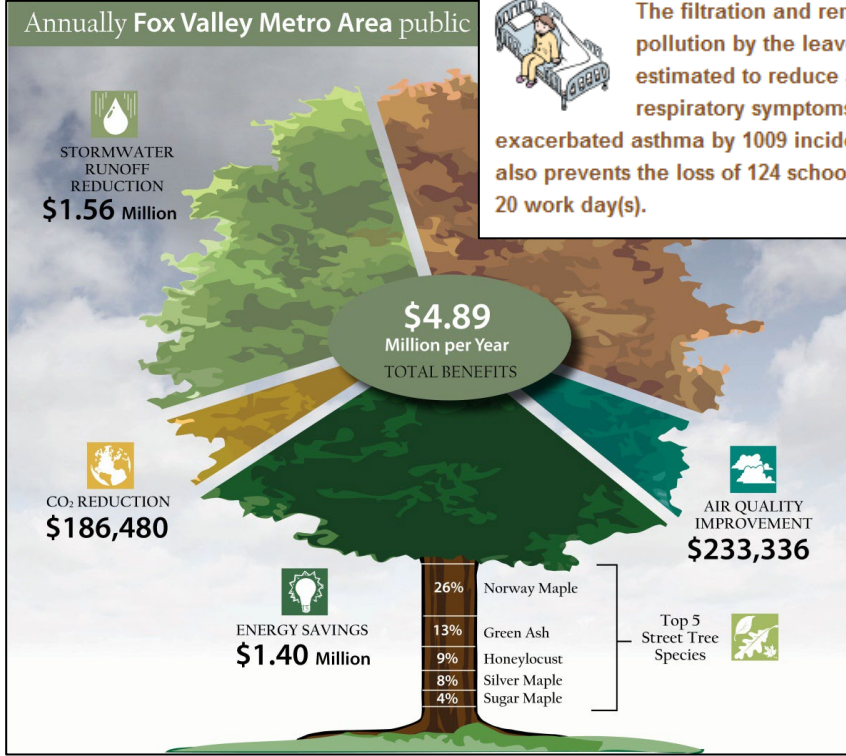


Annual Tree Benefits for Baltimore, MD

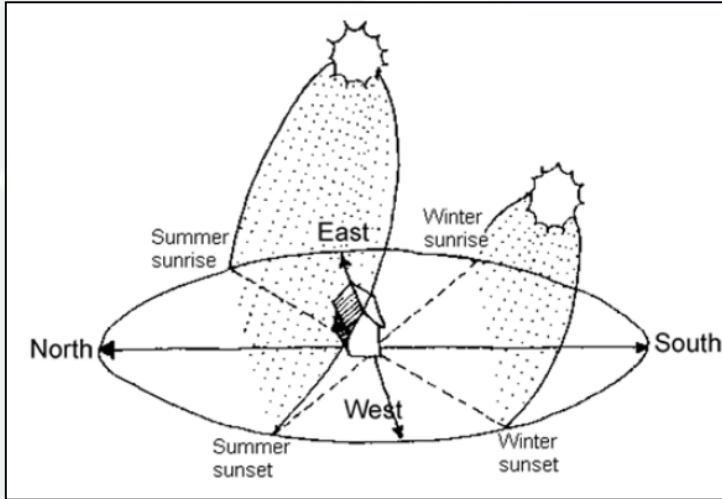
Sequestering carbon as wood in trees counteracts the CO₂ emissions of 7,387 gasoline powered passenger cars.



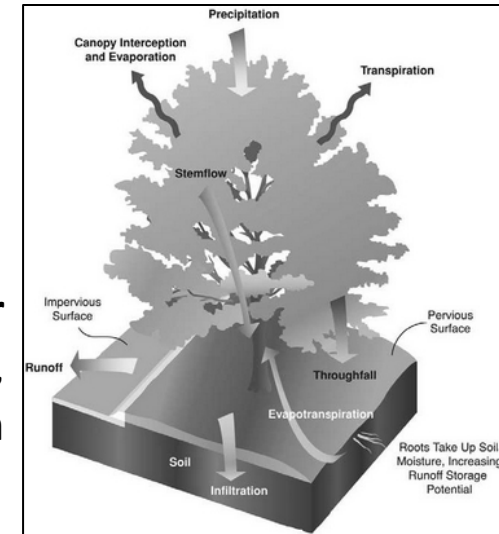
The filtration and removal of air pollution by the leaves of trees is estimated to reduce acute respiratory symptoms and exacerbated asthma by 1009 incidents. This also prevents the loss of 124 school day(s) and 20 work day(s).



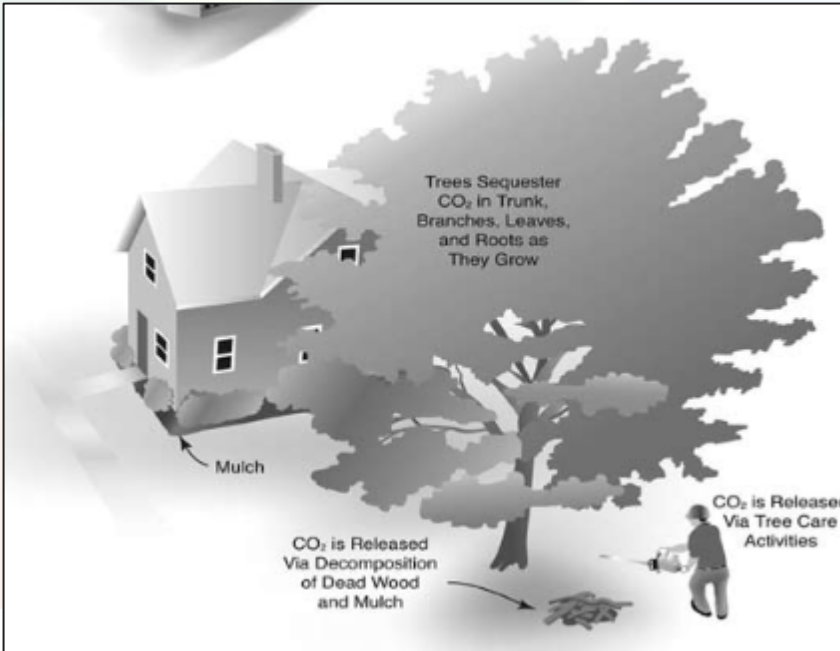
What does i-Tree Estimate and Why?



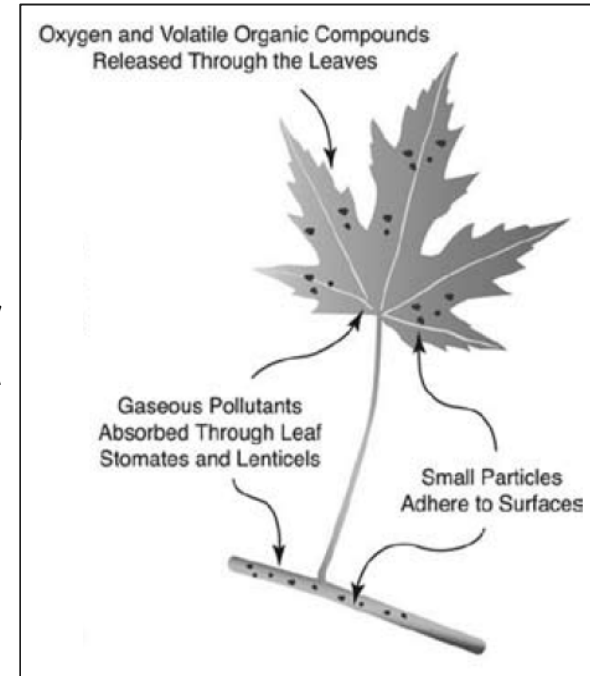
Energy
Tree impacts on heating and cooling



Stormwater
Avoided runoff, evaporation, transpiration



Carbon dioxide
Storage and sequestration of a greenhouse gas



Air Quality
Interaction with EPA criterion pollutants resulting in improved health

The 2023 i-Tree Suite of Tools



Core individual tree tools



Core canopy tools



i-Tree is a Cooperative Initiative among these partners



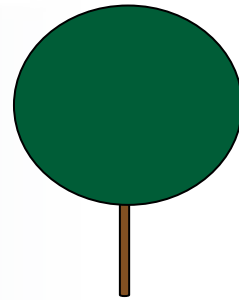
Opportunities for Communities...



- Deliver tree benefits...not just trees
- Monetary estimates to communicate to diverse audiences
- Connect trees to people
- Help throughout grant project
 - Develop your plan
 - Project impact
 - Monitor your work
 - Report out

18 inch red maple
\$40.35 / yr in benefits

2 inch red maple
\$1.64 / yr in benefits





Tree planting plan for Everett

All hands approach...

Public property → 100 trees focusing on large stature

Commercial property → 100 trees to increase community engagement

Residential property → 100 trees in consultation with residents, focus on energy benefits

\$200/tree * 300 trees = \$60,000



Let's put this in i-Tree Planting



Showing impact



	Trees	CO2 avoided	CO2 sequestered	Electricity saved	Fuel saved	Avoided runoff	Air pollution avoided	Air pollution removed
Public planting	100	\$ -	\$ 12,897	\$ -	\$ -	\$ 78,188	\$ -	\$ 7,924
Commercial planting	100	\$ -	\$ 20,171	\$ -	\$ -	\$ 87,007	\$ -	\$ 6,290
Private planting	100	\$ 2,362	\$ 20,546	\$ 10,420	\$ 4,762	\$ 88,792	\$ 53	\$ 7,303
Total	300	\$ 2,362	\$ 53,614	\$ 10,420	\$ 4,762	\$ 253,987	\$ 53	\$ 21,518

\$350,000 in benefits on a \$60,000 investment

More options with i-Tree Planting



- Small trees = small benefits
- Provide support for your approach
- Include reasons for maintenance
- Evaluate species

A screenshot of the i-Tree Planting Calculator website. The page has a white background with a blue header. The header includes the i-Tree logo, the word "Planting" in blue, and navigation links for "Home", "Project" (with a dropdown arrow), and "Menu" (with a dropdown arrow). In the top right corner, there is a "Feedback" link with a dropdown arrow. The main content area features a blue heading "Welcome to the i-Tree Planting Calculator!". Below this, a paragraph explains that the tool estimates long-term environmental benefits in terms of carbon dioxide, air pollution, stormwater impacts, and energy savings. It then provides instructions on how to use the tool, stating it is easy to get estimates and listing required and optional input values. Finally, it lists the types of estimates calculated, such as carbon sequestration and energy conservation.

Planting Home Project Menu Feedback

Welcome to the i-Tree Planting Calculator!

This tool helps you estimate the long-term environmental benefits from a tree planting project in terms of **carbon dioxide**, **air pollution**, **stormwater** impacts, and **energy savings**.

How to use it:
It is easy to get these estimates!

Enter groups of trees with the following:

- Tree species
- Size of trees at planting
- Condition of the trees
- The number of trees in the group
- Project lifetime years

Optionally, you can enter more values to fine tune your estimates:

- Distance and direction to the nearest building
- Estimated mortality of the trees over the project lifetime
- Specific greenhouse gas values for your region

The following estimates are calculated in amounts and dollar values:

- Carbon dioxide sequestered
- Carbon dioxide avoided due to reduction in building energy use
- Energy conserved
- Air pollutants captured and avoided
- Stormwater filtered
- Tree total biomass

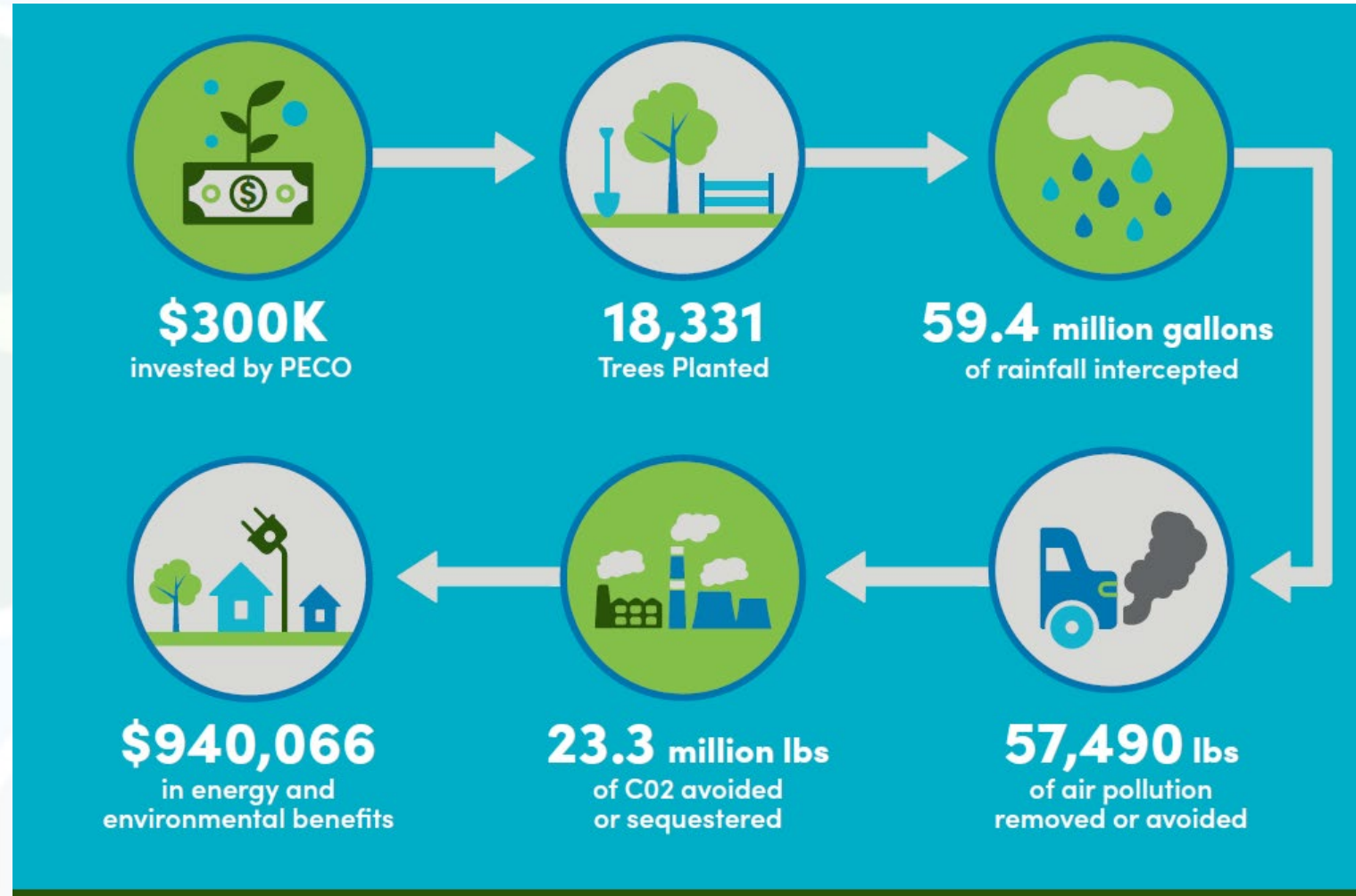
Why use i-Tree Planting?



- Fast!
- Ties directly into funding for planting
- Justification for your design
- Already accepted
 - CalFire
 - LEED certification
 - NJ Trees for Schools



Don't forget reporting



2019-2021 Tree Planting

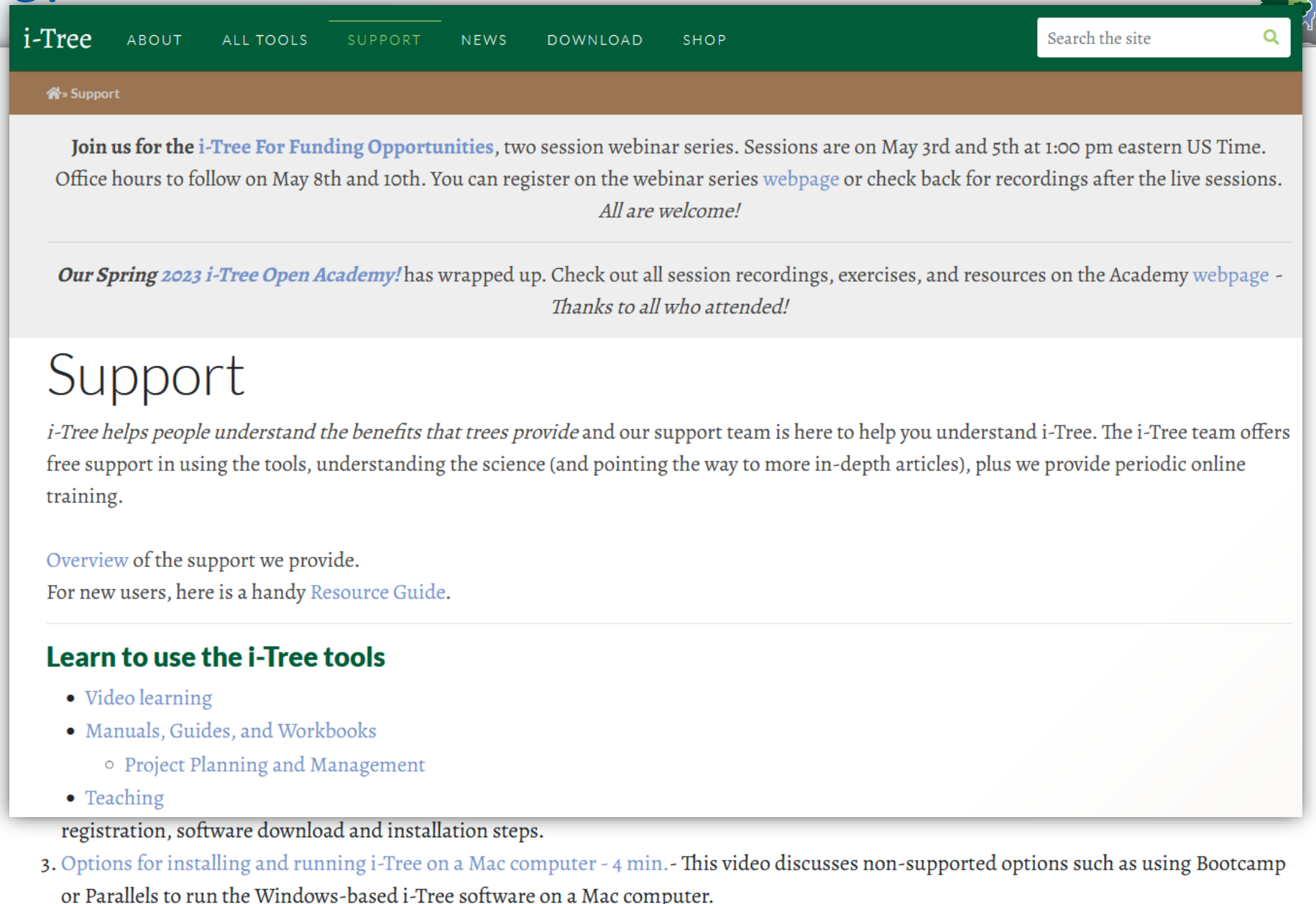
Projected 20 year cumulative values

Source: US Forest Service Northern Research Station & iTree

Want to learn more?

- Start at the Funding Opportunities [page](#)
- i-Tree Academy [page](#)
- Video learning [page](#)
- Support [page](#)
- Session 2: Monitoring, Forecasting, and Strategic Management - Friday, May 5, 1:00-2:00 pm ET
- Office hours – 5/8 and 5/10 1:00-2:00 pm ET

info@itreetools.org



The screenshot shows the i-Tree website's Support page. The navigation bar includes links for ABOUT, ALL TOOLS, SUPPORT (which is highlighted), NEWS, DOWNLOAD, and SHOP. A search bar is located in the top right corner. The main content area features two announcements: one for a webinar series on May 3rd and 5th, and another for the Spring 2023 i-Tree Open Academy. Below these announcements is a section titled 'Support' with a paragraph explaining the support team's role. This is followed by links for an 'Overview of the support we provide' and a 'Resource Guide' for new users. A section titled 'Learn to use the i-Tree tools' lists several resources: Video learning, Manuals, Guides, and Workbooks (with a sub-link for Project Planning and Management), and Teaching. The page also includes a registration step and a video link for installing i-Tree on a Mac computer.

i-Tree ABOUT ALL TOOLS SUPPORT NEWS DOWNLOAD SHOP Search the site

Support

Join us for the **i-Tree For Funding Opportunities**, two session webinar series. Sessions are on May 3rd and 5th at 1:00 pm eastern US Time. Office hours to follow on May 8th and 10th. You can register on the webinar series [webpage](#) or check back for recordings after the live sessions.
All are welcome!

Our Spring 2023 i-Tree Open Academy! has wrapped up. Check out all session recordings, exercises, and resources on the Academy [webpage](#) -
Thanks to all who attended!

Support

i-Tree helps people understand the benefits that trees provide and our support team is here to help you understand i-Tree. The i-Tree team offers free support in using the tools, understanding the science (and pointing the way to more in-depth articles), plus we provide periodic online training.

[Overview](#) of the support we provide.
For new users, here is a handy [Resource Guide](#).

Learn to use the i-Tree tools

- [Video learning](#)
- [Manuals, Guides, and Workbooks](#)
 - [Project Planning and Management](#)
- [Teaching](#)

registration, software download and installation steps.

3. [Options for installing and running i-Tree on a Mac computer - 4 min.](#) - This video discusses non-supported options such as using Bootcamp or Parallels to run the Windows-based i-Tree software on a Mac computer.